



Pinhole

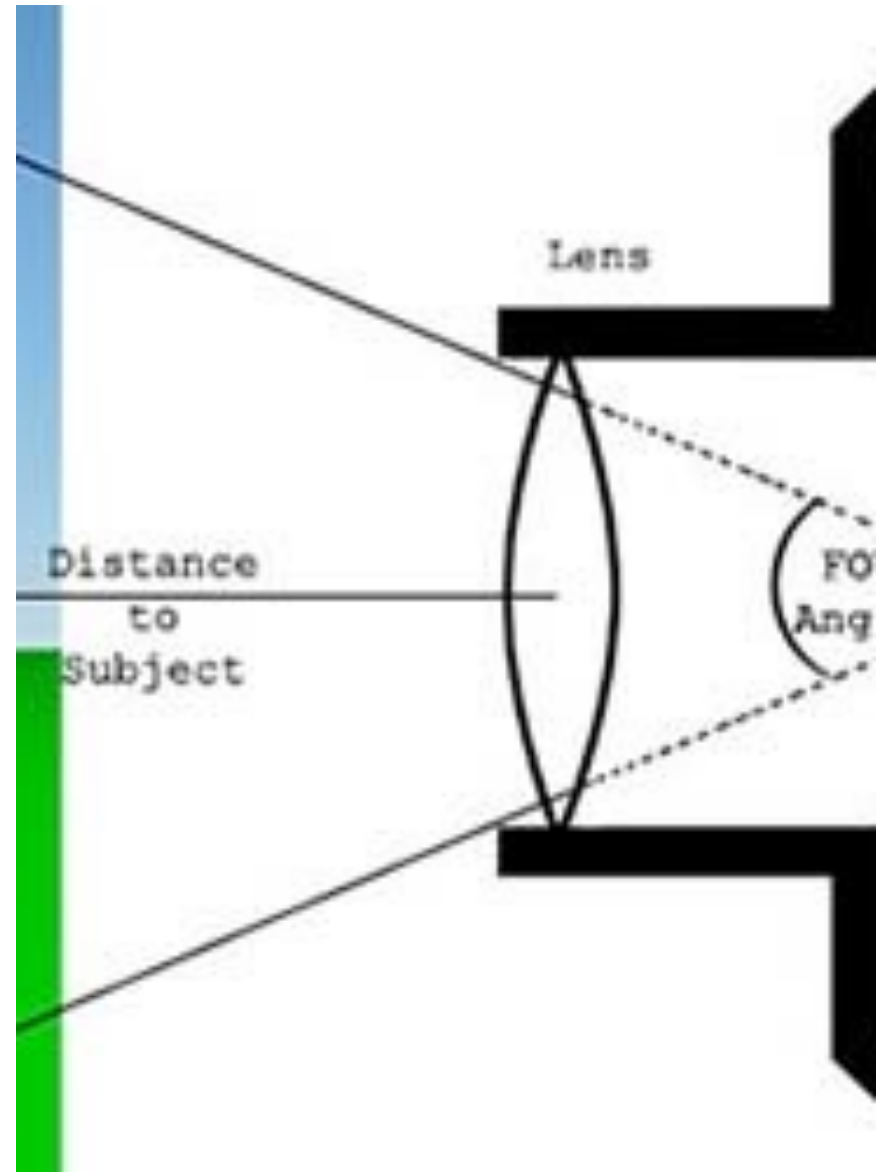


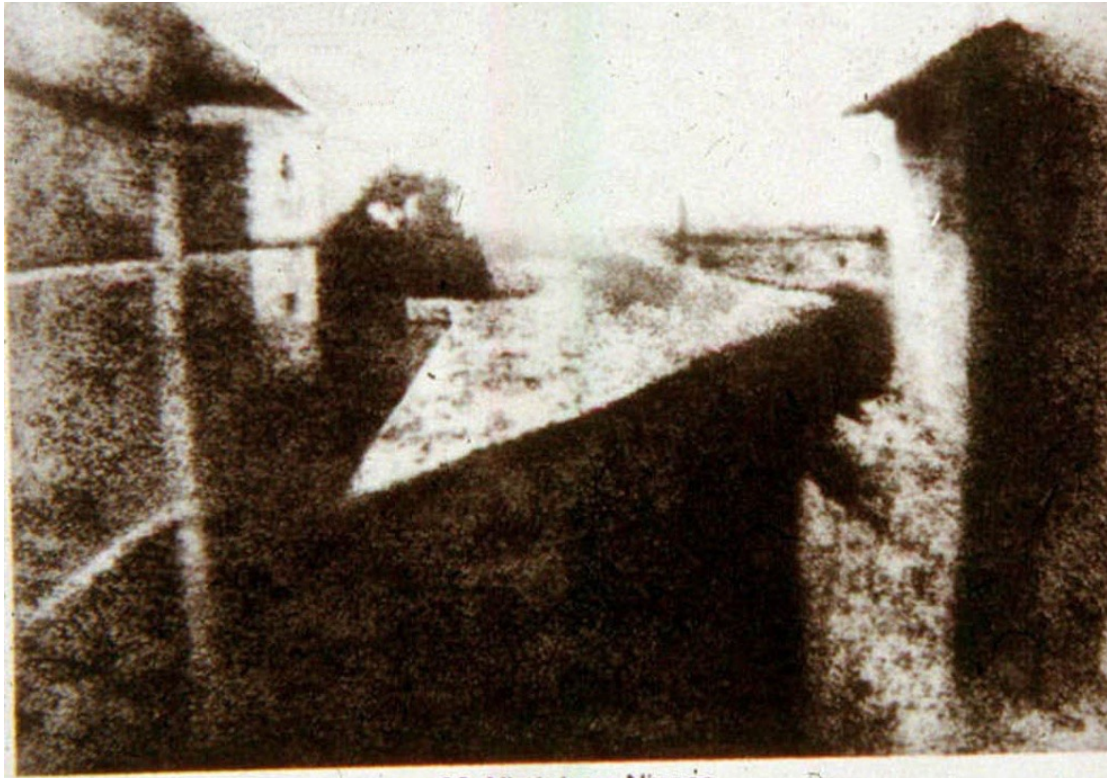
Camera obscura is a
'dark chamber'

1569 Battista della
Porta

CAMERA OBSCURA

HOW DOES IT WORK?



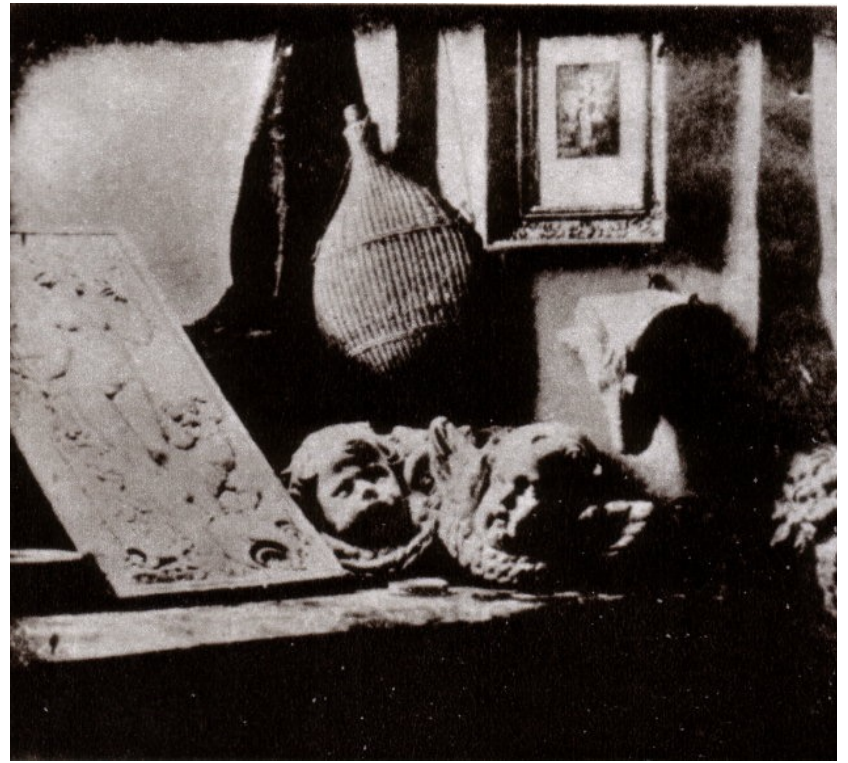
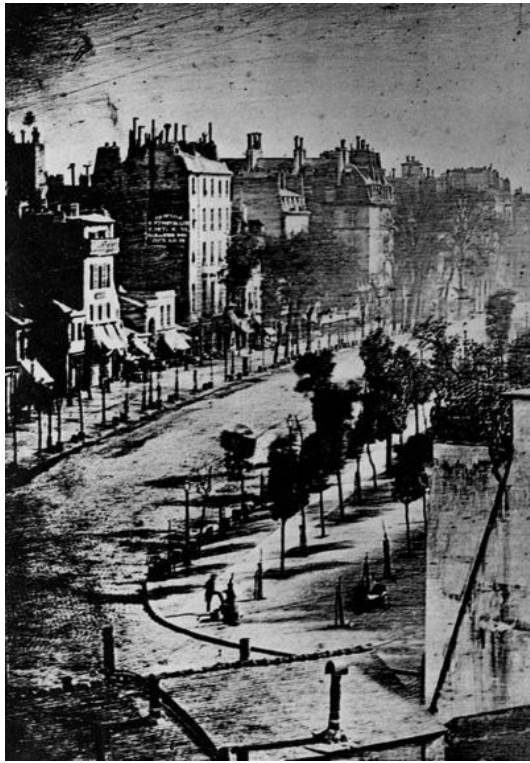


90. Nicéphore Niépce.
View Through a Window at Grasse. 1826.

view from his attic
window after 8 hour
exposure

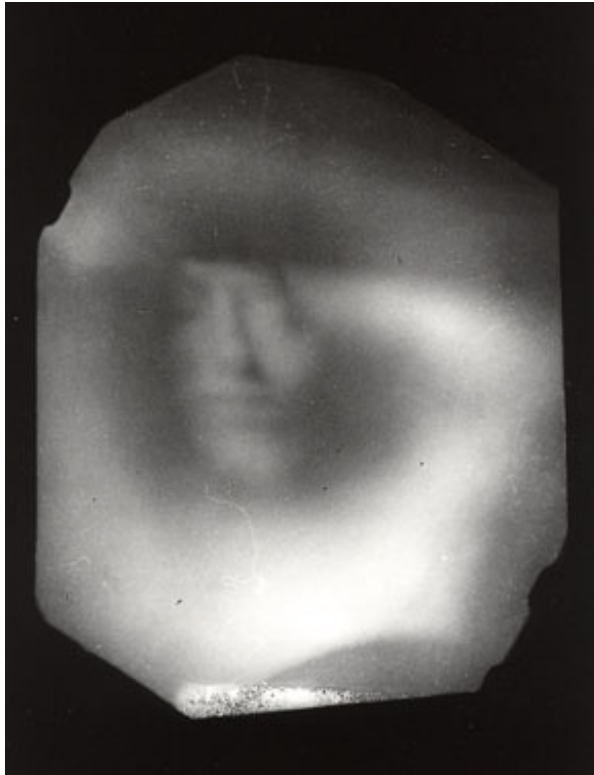
a fuzzy but
atmospheric image

NIEPCE (1765-1833)



LOUIS-JACQUES-MANDE DAGUERRE
(1807-1851)

PAOLO GIOLI

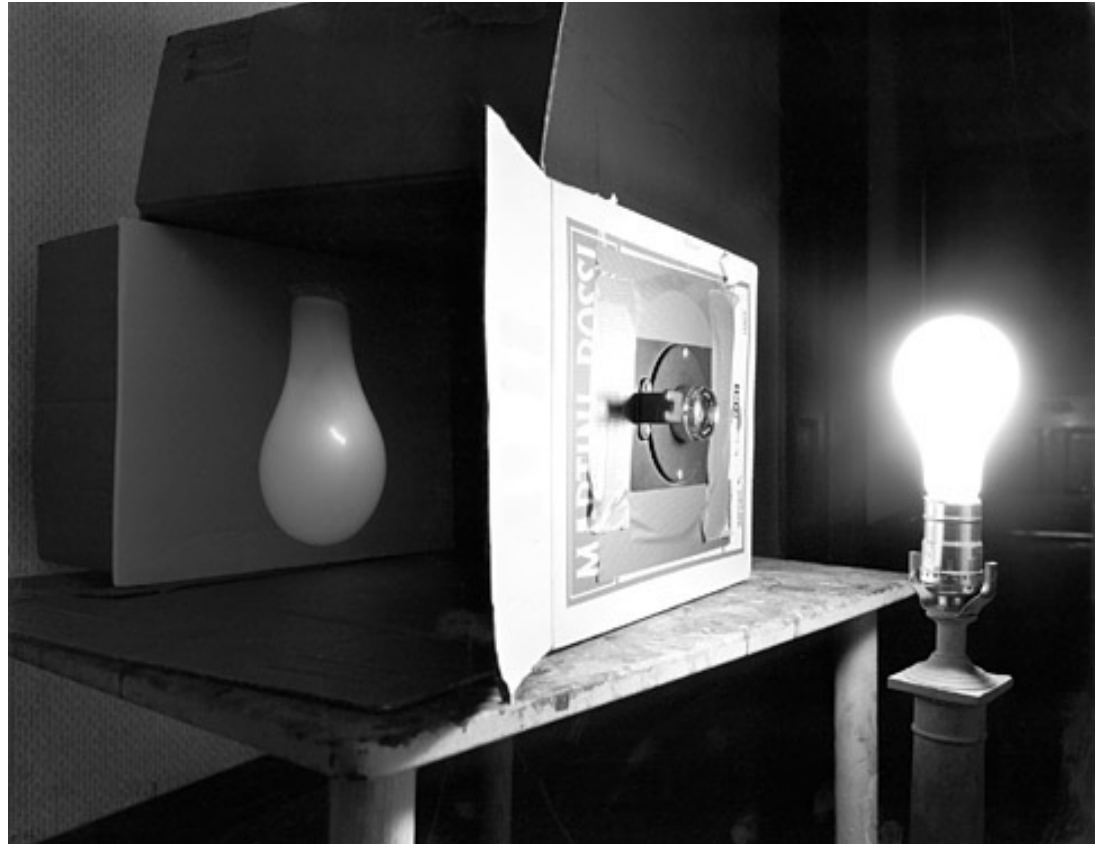




Mexican Series 1969

ERIC RENNER |

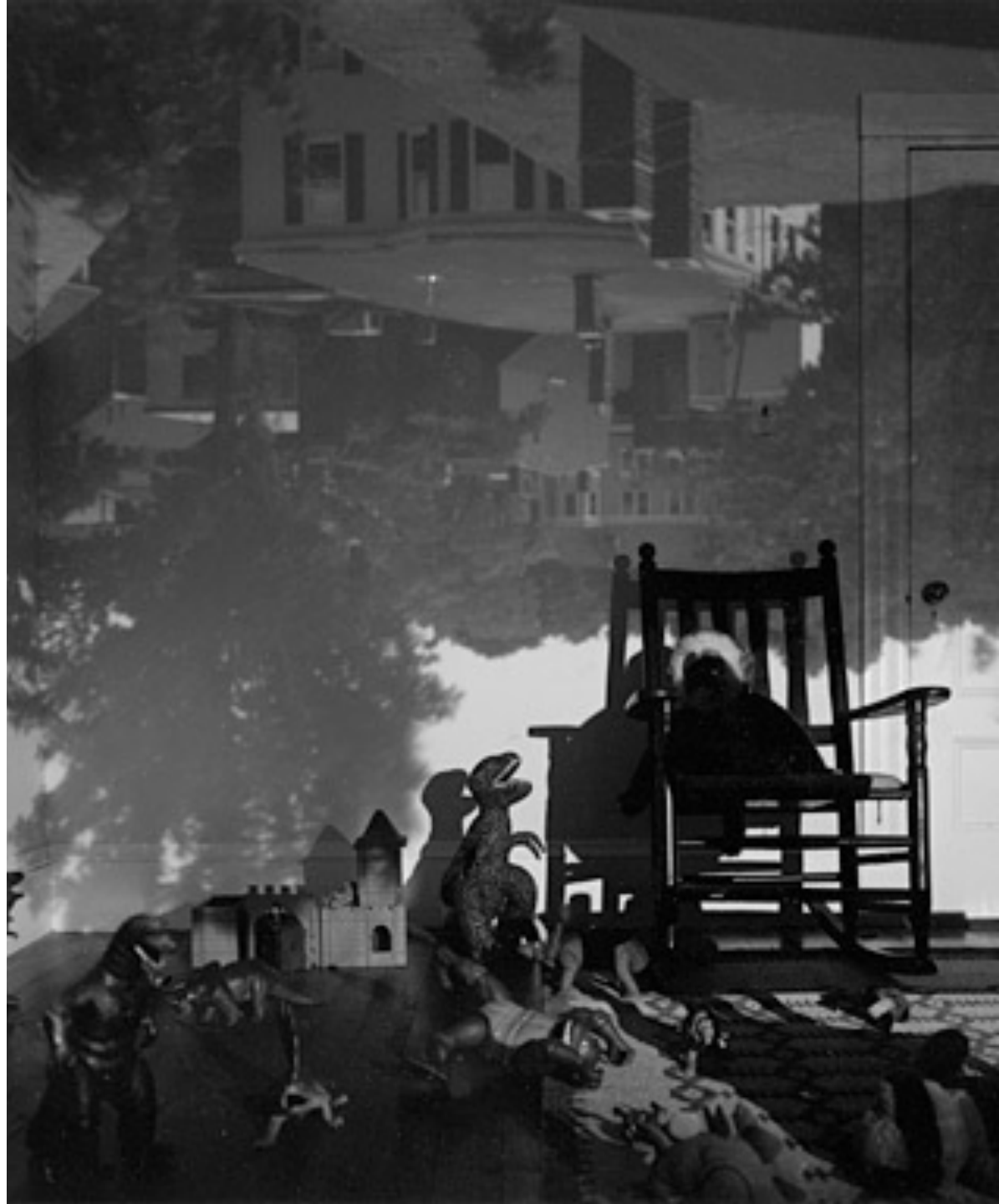
CAMERA
OBSCURA —
ABELARDO
MORELL





ABELARDO MORELL |

ABELARDO MORELL

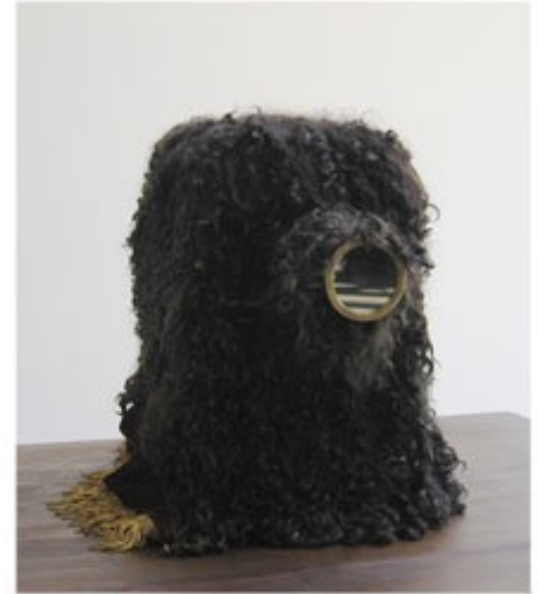




MINNIE WEISZ

"Hair Obscura"

STEPHEN BERKMAN



Camera obscura - image projects onto the interior base of the obscura as depicted in Scientific American engraving.
Dimensions: Length 26" Height 19 1/2", Width 18"



Camera Obscura with 19th century tent obscura prism lens. Image is projected inside of the hoop dress.
Dimensions: Height 72", Diameter 64"



Engraving: "Obscura Object" 1

STEPHEN BERKMAN



JUSTIN QUINNELL |

JUSTIN
QUINNELL

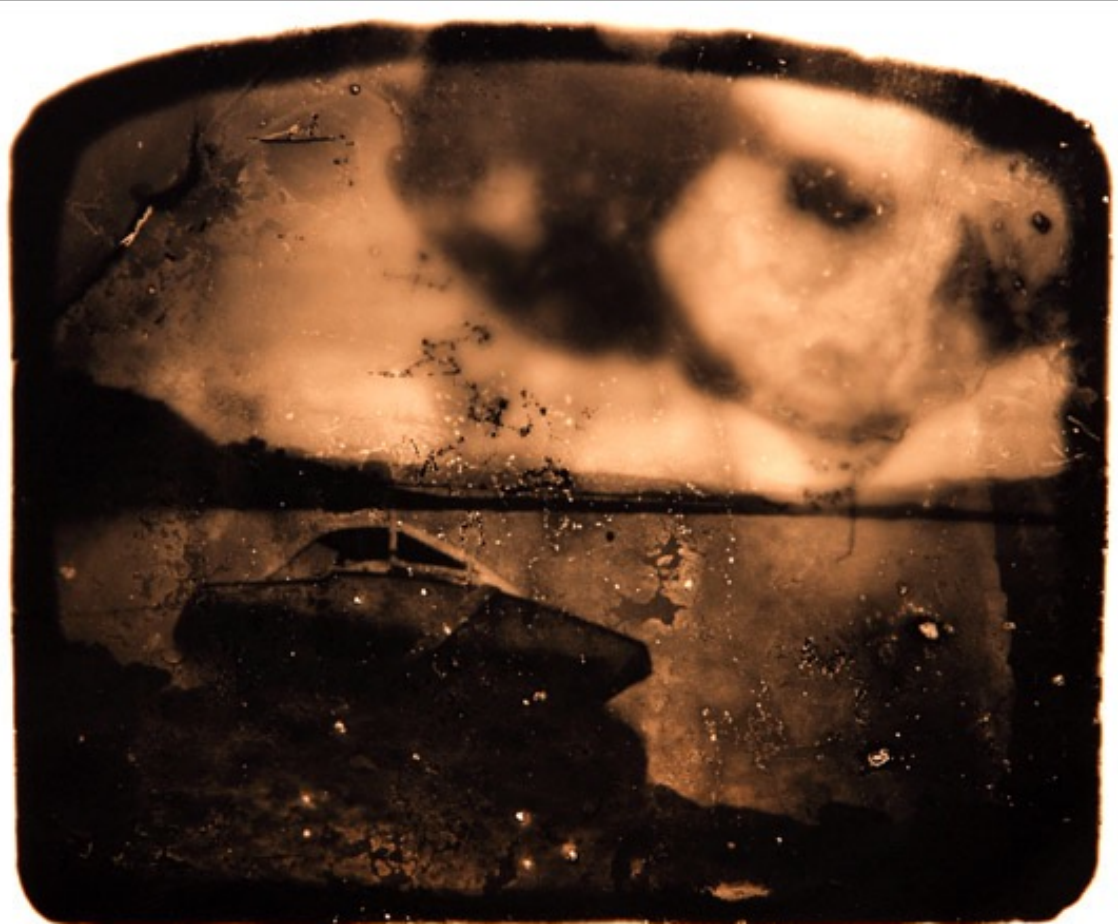




VOLKSWAGON VAN CAMERA 1990

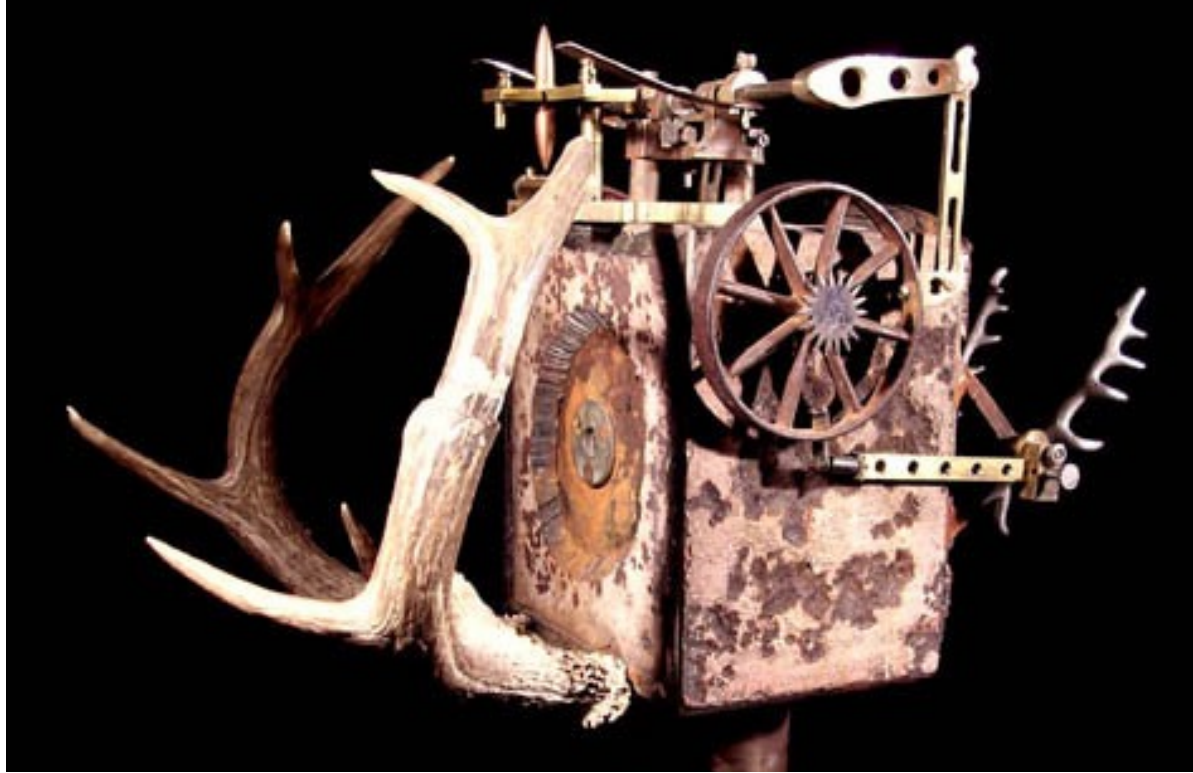
[HTTPS://BRENDANBARRY.CO.UK/CAMERAS](https://brendanbarry.co.uk/cameras) /CHEESE





WAYNE MARTIN BELGER

WAYNE MARTIN
BELGER





PINHOLE CAMERAS

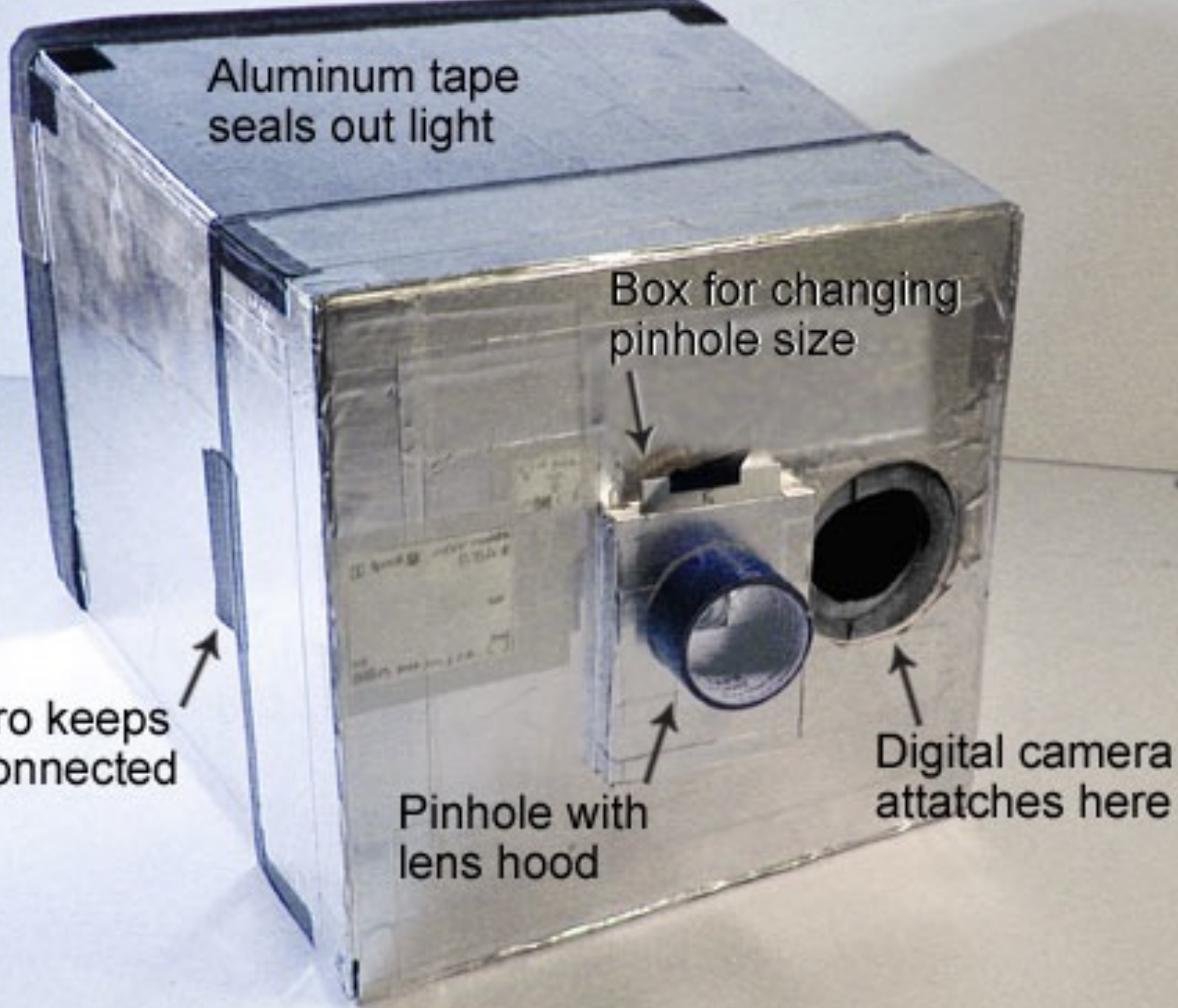
Aluminum tape
seals out light

Box for changing
pinhole size

Velcro keeps
lid connected

Pinhole with
lens hood

Digital camera
attaches here



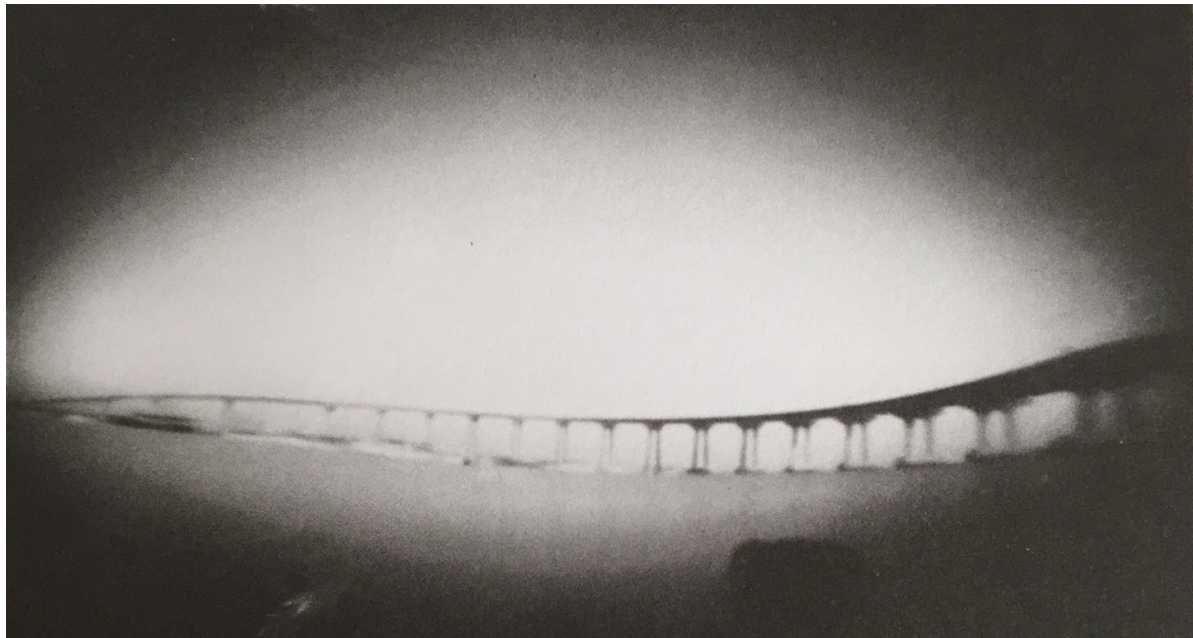


PAPER NEGATIVES



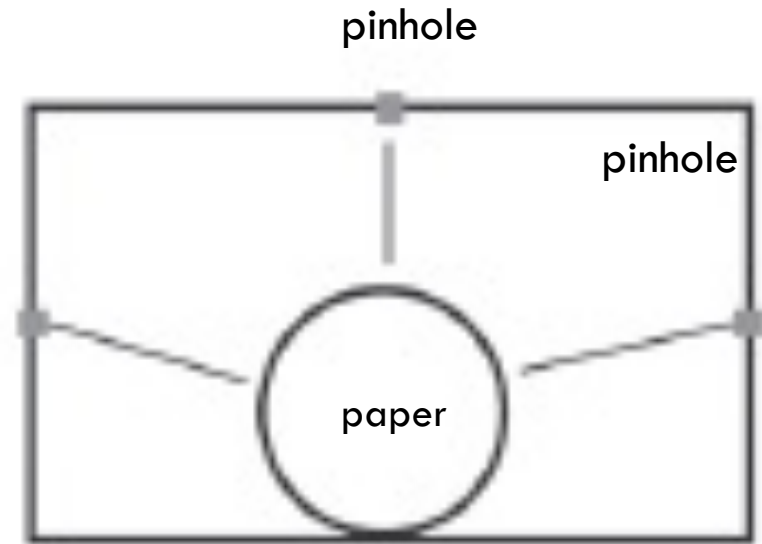
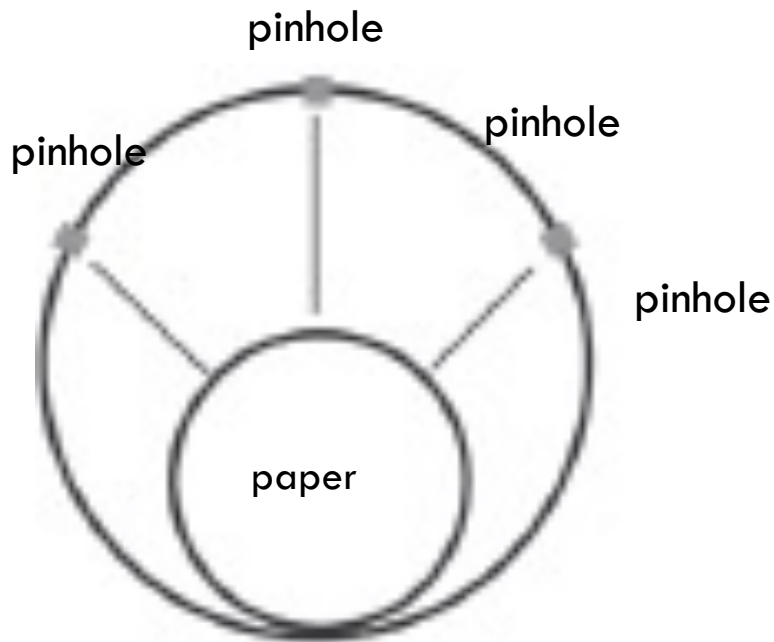
INVERTING PAPER NEGATIVES

COFFEE CAN





MULTIPLE PINHOLE — 180 DEGREE CAMERA



MULTIPLE PINHOLE



MULTIPLE PINHOLE



DSLR

- ▶ CAMERA BODY
CAP
- ▶ ISO 100
- ▶ EXPOSURE
VARIED DEPENDING
ON LIGHT



SHOE BOX



HOLGA WITH PROVIA FILM



MAKING THE PINHOLE

- SMALL SHEET OF METAL (SODA CAN. TINFOIL, BAKING TIN. OR 1 MIL COPPER FOIL)
- PINHOLE DRILL
- BLACK OPAQUE PAPER PHOTO TAPE
- SCISSORS
- PAD OF PAPER OR PIECE OF CARDBOARD

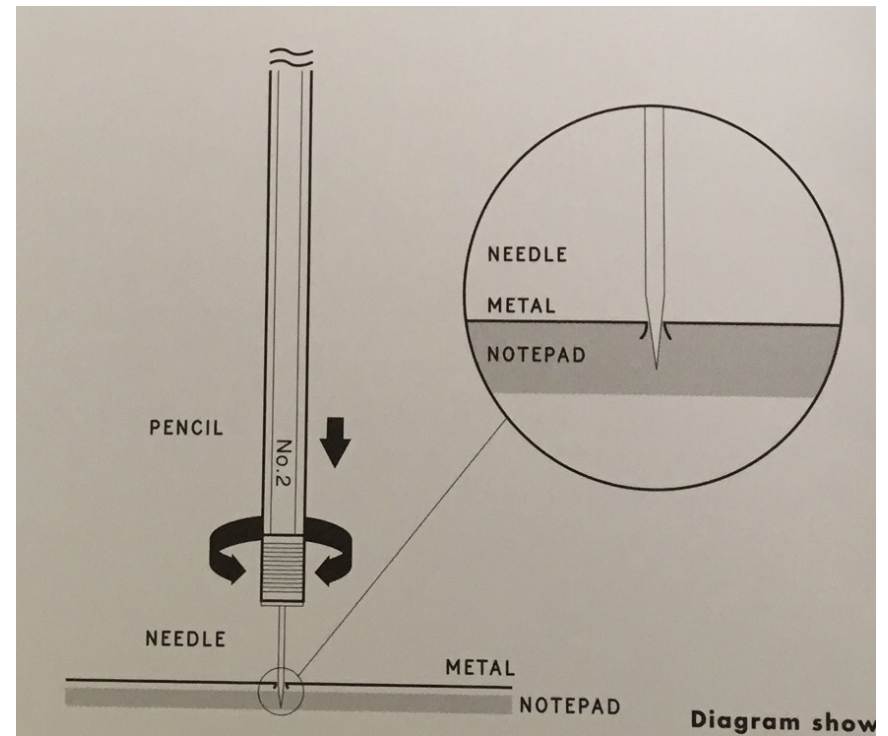


PHOTO PAPER

Is Sensitive to UV and Blue Light

Iso 3

Cut to any size

Glossy paper



TIPS

Use Mother Earth as Your Tripod

Test, Test, Test. Then Shoot.

Get a Feel for the Light

Stay in the Moment

A roll of masking tape and a small black permanent marker



MAKE YOUR OWN |